

Combined Counties League Premier Division Saturday 21 September 2013 - Kick-off 3pm			
Epsom & Ewell (Royal blue and white shirts, Blue shorts)		v.	Whyteleafe (Green shirts, White shorts)
1	Keiron CAMPBELL	1	David WILLIAMS
2	Sam CURRIE	2	Tom PRATT
3	Jamie HATFIELD (Capt)	3	Tommy SMITH
4	Alex McKAY	4	Aaron LEACOCK
5	George MURPHY	5	Cedric ABRAHAM
6	Carl DOWNS	6	Jason THOMPSON
7	Ben HAYWARD	7	Calvin HEADLEY
8	Karl DOUGHLIN	8	Jensen GRANT
9	Robbie BURNS	9	Taylor SMITH
10	Kyle HOUGH	10	Gareth WILLAIMS
11	Alex McGREGOR	11	Bentley GRAHAM
12	James TAYLOR	12	Adam BROOMHEAD
14	Russell HARTT	14	Mark HYNES
15	Jordayne HENRY	15	Ryan FOWLER
16	Nathan AYLING	16	Josh READ
17	Mark JARMAN	17	Lewis DAVID
18	Matt SMITH	18	
Manager: Lyndon Buckwell Assistants: Glynn Mandeville and Tony Coombe Player-Coach: Russell Banyard Physio: Ken Jones		Manager: John Fowler Assistant: Dean Davenport Coach: Rob Smith Physio: N/A	

Referee: Aivaras Lukauskis

Assistants: Kevin Howard, Jamie Broughton

Today's Match and Match ball Sponsor is Paul Merritt

Next Home match
Combined Counties League – Premier Division
Epsom & Ewell v. Wembley
on Tuesday 24 September 2013 at 7.45pm



Welcome to

Epsom & Ewell v. Whyteleafe Saturday 21 September 2013

Good afternoon everyone and welcome to High Road, Chipstead. We extend a warm welcome to our visitors from Whyteleafe, the match officials, the officials and supporters of both clubs and any casual visitors for this afternoon's match. We hope everyone enjoys this afternoon's entertainment and has a safe journey home afterwards. From an Epsom & Ewell perspective, we hope for a different result to the last time the two clubs met in the FA Challenge Cup Extra Preliminary Round a month ago! Should the scores remain level after 90 minutes 30 minutes extra time will be played. If they are still level then there will be a penalty shoot-out. This enables both clubs to confirm their next matches without the complications of a replay so Wembley at home for us on Tuesday.

Despite our defeat to Chessington last week we have had a great start to the season and remain top of the table. We would like to stay up in contention and also bearing in mind our hopes of future development the club has decided to have a fundraising push this year. The first part of this is our attendance at the Epsom and Ewell Borough Fun Day in which we are running three pitches tomorrow in conjunction with our Charity Partners Mid Surrey Mencap. We will be providing some fun games and activities for the public and promoting the club. We will also be launching the Pitch Squares Fundraising Grid. The idea being we are dividing a nominal pitch into 200 squares for which individuals or companies can have their name printed in the programme or on the website for £10 per square. By the end of the season we will be having a Prize draw for 1/4 of all the proceeds (maximum £500) to encourage completion. Another part of the push on promoting the club was handing out flyers to the crowds watching the Tour of Britain this morning. If there are any of you here who are first timers you are very welcome and please say hello to the committee members on the gate or in the clubhouse. Non-league football is fun, friendly, local and great value!

Steve Dyke,
Epsom & Ewell Football Club Programme Team

**Cover photo of goal mouth action at the Chessington & Hook home game
on Saturday 21 September 2013 by Gemma Jarman**

Match photos by Gemma Jarman



Cherry Red Records Combined Counties League Premier Division Table 2013-2014

Pos	Team	P	W	D	L	F	A	GD	Pts
1	EPSOM & EWELL	9	8	0	1	17	4	+13	24
2	Hanworth Villa	8	6	1	1	24	11	+13	19
3	South Park	7	6	0	1	20	6	+14	18
4	Windsor	8	5	2	1	18	9	+9	17
5	Raynes Park Vale	8	5	1	2	15	14	+1	16
6	Hartley Wintney	6	4	1	1	15	10	+5	13
7	Westfield	7	4	0	3	11	10	+1	12
8	Farnham Town	7	3	2	2	12	10	+2	11
9	Badshot Lea	7	3	2	2	8	7	+1	11
10	Frimley Green	7	3	2	2	18	18	+0	11
11	Croydon	8	3	1	4	10	13	-3	10
12	Ash United	9	3	1	5	11	15	-4	10
13	Mole Valley SCR	9	3	1	5	14	21	-7	10
14	Molesey	7	3	0	4	8	10	-2	9
15	Bedfont Sports	9	2	2	5	6	11	-5	8
16	Colliers Wood United	10	2	2	6	13	19	-6	8
17	Camberley Town	6	2	1	3	7	8	-1	7
18	Wembley	6	2	0	4	6	8	-2	6
19	Chessington & Hook	7	2	0	5	9	14	-5	6
20	Horley Town	7	1	1	5	7	12	-5	4
21	Cove	7	1	1	5	9	17	-8	4
22	Alton Town	7	1	1	5	7	18	-11	4

Table dated: Tuesday 17 September 2013

Last results: Horley Town 1-2 Croydon, Molesey 1-2 Colliers Wood United, Wembley 4-1 Chessington & Hook United

Lady behind the lens (Cont.)



Photo Left: Gemma's favourite photo - Nathan Ayling's goal celebration in the match against Cove in August.

Do you have a favourite Epsom & Ewell goal?

My best "goal" moments last season were Alex McGregor's free kick against Bedfont Sports and Mark Jarman's goal against Egham, which got us through to the League Cup Final.

Photo Right: Mark Jarman after the semi-final winning goal at Egham.

What is your favourite Epsom & Ewell moment?

My best "moment" has to be the boys celebrating after winning the League Cup!



Lady behind the lens



Club Photographer - Gemma Jarman

Epsom & Ewell Football Club are very fortunate to have a Club Photographer, Gemma Jarman, whose excellent photos enhance appearance of the Matchday Programme and the Club's website. Gemma's photos have featured on the Club's website since it was first launched on the Pitchero platform at the start of the 2010/11 season. There was a spell during 2012 when Gemma's son, ace

striker Mark Jarman, returned to Bookham Football Club but with that exception, Gemma has braved fair weather and foul to provide superb photos throughout the past four seasons, ably assisted by her daughter, Lauren, who stands in for Gemma when she is unable to attend a game and who has provided equally impressive action shots herself. Gemma's contribution to the Club is highly valued and we took the opportunity to ask her a few questions to find out more about her interest in sports photography.

How long have you been interested in photography?

My interest in photographing football started around 2007 when I just captured a few shots with my little Olympus camera. I was photographing Bookham FC and loading them to Facebook. The team seemed to quite like this, so I carried on!

How long have you been taking photos at football matches?

I started at Epsom & Ewell FC when my son joined the team, which was around July 2009.

Did you take photos when Mark was at other Clubs?

Other teams that I have photographed are, Bookham FC, Saturday, Sunday and reserve Teams and Surrey Wanderers FC.

What type of camera do you use?

My current camera is a Canon 600D, with a 70-200mm 2.8l lens.

Do you have a favourite Epsom & Ewell photo?

It's hard to choose a favourite photo, anything that makes the front of the programme or one on Facebook that gets loads of "likes" or comments are usually good! My current choice, is the photo that Lauren (my daughter) took of Vic McGregor during Movember! And Nathan's goal celebration from Cove's match. (24th Aug 2013).

Photo Right: Gemma's favourite by daughter Lauren, the late Vic McGregor during Movember.



The Manager

Lyndon Buckwell

This afternoon, we welcome Whyteleafe back to the High Road.

I think we can all remember what happened last time they were here. Hopefully, we can put in a better performance this time around. It's an important game for us as we come into the game on the back of a home defeat against Chessington & Hook, so I'm waiting to see how we respond.



Everyone knows we like to play football but when you play at this level of football sometimes you have to mix it up a bit. This is something we struggle to do. I don't want to be too hard on the lads because, so far, they've been superb but with a bit of fine tuning, I think we could challenge for promotion!

Enjoy the game.

Lyndon

EEFC Twitter

follow us on
twitter



We now have 898 Followers!

Join in the fun and get goal updates and the latest news on Epsom & Ewell Football Club. You can follow Epsom & Ewell Football Club by visiting our Twitter page: <http://twitter.com/EEFCWebmaster#> and clicking on the Follow button.

Whyteleaf Football Club History



Whyteleaf F.C. is an English semi-professional football club based in Whyteleaf, Surrey. The club was established in 1946 and joined the Athenian League in 1981. The club is an FA Chartered Standard club affiliated to the Surrey County Football Association. They are currently members of the Southern Counties East League. Whyteleaf F.C. was formed in 1946, replacing another club, Whyteleaf Albion, which had existed before World War II. The new club initially played junior football in such local leagues as the Thornton Heath & District League, before gaining senior status and joining the Surrey Senior League in 1958, at which time they moved to the Church Road ground where they play to this day. Whyteleaf were Surrey Senior League champions on at least one occasion in the 1960s before switching to the London Spartan League in 1975. In 1981 they switched to the Athenian League and then in 1984 to the Isthmian League. In 1989 they were promoted to Division One, a level at which they played for 23 years (albeit with league reorganisations placing the team in Division One South from 2002 to 2004 and again in 2006). In 1999, they reached the First Round Proper of the FA Cup for the first time in their history and held Chester City to a 0–0 draw before losing the replay. At the end of the 2011–2012 season the club were relegated from the Isthmian League to the Kent League.

Whyteleaf play their home games at Church Road, Whyteleaf, Surrey, CR3 0AR.

The site of Church Road was formerly farmland, and the farm's existing buildings were converted into the clubhouse and dressing rooms. The club originally planned to add a running track and cricket pitch to the complex, but these plans were abandoned. Floodlights were added in the early 1980s and a new main stand added in 1999 for the club's first round FA Cup match against Chester City, which saw a record attendance of 2,164. Some of the turnstiles added at the ground were purchased from Stoke City's Victoria Ground after they moved to the Britannia Stadium in 1997.

Records

Best league performance: Fifth in Isthmian League Division One South, 2002–2003

Best FA Cup performance: First round proper, 1999–2000

Best FA Trophy performance: Fourth round, 1998–1999

Best FA Vase performance: Fifth round, 1980–1981, 1985–1986

Honours

Surrey Senior Cup: Runners-Up (2): 1987–1988, 2007–2008

East Surrey Charity Cup: Runners up (1): 1977–1978

Surrey Junior Cup: Runners up (1): 1951–1952

EEFC Player in focus – Anthony Panayi

Photos by Gemma Jarman

Left: Anthony Panayi heads the ball away from an Alton Town player.



Right: Anthony Panayi charges forward for Epsom at the Chessington & Hook game.

Below: Anthony Panayi in an aerial battle at Alton Town.



Position:
Defender

Appearances:
This season = 9
Total = 115

Goals:
This season = 1
Total = 3

CCL Premier Division Clubs – Fixtures

Saturday 21 September 2013 (Sunday = Being played Sunday 22 September 2013)

FA Vase – 2nd Qualifying Round

Ashford United (SCEL)	v.	COBHAM (CCL1)	15.00
BANSTEAD ATHLETIC (CCL1)	v.	Phoenix Sports (SCEL)	15.00
Bracknell Town (HELP)	v.	HARTLEY WINTNEY	15.00
CHESSINGTON & HOOK UNITED	v.	Dorking Wanderers (SCL1)	15.00
Chinnor (HEL1E)	v.	BEDFONT & FELTHAM (CCL1)	15.00
CROYDON	v.	Cray Valley (PM) (SCEL)	15.00
EPSOM & EWELL	v.	Whyteleafe (SCEL)	15.00
FARNHAM TOWN	v.	Slimbridge (WLP)	15.00
Fisher (SCEL) (Sunday)	v.	AFC CROYDON ATHLETIC (CCL1)	15.00
Glebe (KIL)	v.	DORKING (CCL1)	15.00
Milton United (HEL1E)	v.	BEDFONT SPORTS	15.00
MOLE VALLEY SCR	v.	Greenwich Borough (SCEL)	15.00
New College Swindon (HEL1W)	v.	STAINES LAMMAS (CCL1)	15.00
WEMBLEY	v.	Hatfield Town (SSMLP)	15.00
WESTFIELD	v.	Thame United (HELP)	15.00
WINDSOR	v.	CAMBERLEY TOWN	15.00
Woodstock Sports (SCEL) (Sunday)	v.	EPSOM ATHLETIC (CCL1)	15.00

Combined Counties League – Premier Division

Alton Town	v.	Colliers Wood United	15.00
Ash United	v.	Frimley Green	15.00
Hanworth Villa	v.	Badshot Lea	15.00
Molesey	v.	Horley Town	15.00
South Park	v.	Cove	15.00

Tuesday 24 September 2013

Combined Counties League – Premier Division

Alton Town	v.	Cove	19.45
Bedfont Sports	v.	Chessington & Hook United	19.45
EPSOM & EWELL	v.	Wembley	19.45
Farnham Town	v.	Raynes Park Vale	19.45
Frimley Green	v.	Horley Town	19.45
Molesey	v.	Mole Valley SCR	19.45
Windsor	v.	Hartley Wintney	19.45

Southern Counties East League Table

Pos	Team	P	W	D	L	F	A	GD	Pts
1	Phoenix Sports	9	6	0	3	22	14	8	18
2	Erith Town	7	5	2	0	18	8	10	17
3	WHYTELEAFE	7	5	1	1	19	7	12	16
4	Tunbridge Wells	7	5	1	1	18	9	9	16
5	Ashford United	6	5	0	1	17	8	9	15
6	Corinthian	6	4	1	1	17	7	10	13
7	Holmesdale	6	3	1	2	8	9	-1	10
8	Sevenoaks Town	7	3	0	4	17	19	-2	9
9	Cray Valley PM	6	2	2	2	13	11	2	8
10	Lordswood	8	2	2	4	11	17	-6	8
11	Canterbury City	7	2	1	4	7	12	-5	7
12	Greenwich Borough	7	2	1	4	14	20	-6	7
13	Deal Town	6	2	0	4	7	16	-9	6
14	Rochester United	6	1	2	3	9	12	-3	5
14	Fisher	8	1	2	5	7	20	-13	5
16	Beckenham Town	8	1	1	6	10	16	-6	4
17	Woodstock Sports	7	1	1	5	9	18	-9	4

Up to and including matches played on Tuesday 17 September 2013.

Whyteleafe FC's results so far this season:

Date	Opponents	H/A	Score	Comp	Att:
Saturday 10 August	ROCHESTER UNITED	Home	D 2-2	SCEL	65
Tuesday 13 August	Beckenham Town	Away	W 2-1	SCEL	120
Saturday 17 August	EPSOM & EWELL	Home	D 3-3	FAC EP	118
Wednesday 21 August	Epsom & Ewell	Away	W 6-1	FAC EPR	93
Saturday 24 August	WOODSTOCK SPORTS	Home	W 2-0	SCEL	68
Monday 26 August	Fisher	Away	W 4-0	SCEL	73
Saturday 31 August	Croydon	Away	W 2-0	FAC 1Q	110
Saturday 7 September	GREENWICH BOROUGH	Home	W 2-0	SCEL	120
Tuesday 10 September	Sevenoaks Town	Away	L 0-3	SCEL	58
Saturday 14 September	HORLEY TOWN	Home	W 3-0	FAC 2Q	117
Tuesday 17 September	PHEONIX SPORTS	Home	W 5-1	SCEL	68

Whyteleafe Player and Staff Profiles

John Fowler: Manager

John had a brief spell at Church Road as a player before moving on to enjoy a successful period at Croydon Athletic where he had a reputation as a great goal scorer. In management, after a spell as Assistant Manager at Chipstead, replaced Dickson Gill as manager at Croydon. John took little persuasion to move to Whyteleafe following the resignation of Steve Griffin in July 2013.

Dean Davenport: Assistant Manager

'Davvers' returned to the club ahead of the 2013-14 season having had two spells with Whyteleafe as a player.

Rob Smith: Coach

Experienced central midfielder for 'Leafe and Met Police but eventually was forced to retire through injury and took up coaching. Had spell as joint caretaker manager at Merstham before returning to Whyteleafe in 2012.

John Odum: Goalkeeper

Experienced keeper who joined Whyteleafe ahead of the 2013-2012 season from Croydon FC. The 37 year old has also played for Clapton, Erith & Belvedere, St Leonards, Dulwich Hamlet, Tooting & Mitcham United, Wimbledon.

Lou Clark: Defender

Can play left or right back. Has a great work ethic and much experience. Spent early part of his career at Walton & Hersham where he worked his way up from the youth team to club captain. Spent some time at Chipstead but signed for Whyteleafe from Merstham. A popular player with the fans and won the Supporters' Player of the Year in 2013.

Cedric Abraham: Defender

Big powerful old school centre half signed for Whyteleafe in October 2012. Previous clubs include Fisher Athletic, Maidstone United and Sittingbourne but signed from Greenwich Borough.

Tommy Smith: Defender

No defence is complete without a Tommy Smith. Tommy broke into the first team last season after coming through the Whyteleafe Youth Team. A strong tackler and full of energy.

Adam Broomhead: Defender

A big character and key player in heart of defence. Other clubs include Merstham and even Lingfield.

Jason Thompson: Midfield

A big presence in the centre of the Whyteleafe midfield. Joined Whyteleafe from Croydon FC and likely to gain the captain's armband.

Bentley Graham: Midfield

Now in his second spell with 'Leafe, Bentley started his football at Sutton United. Rejoined Whyteleafe from Ryman side Leatherhead midway through the 2012-2013 season. Such was his impact in this season that he won the Player of the Year Award. With his father David winning the award in the 1990s.

Paul Scott: Midfield/Forward

Now in his umpteenth season with Whyteleafe having played through the youth team and playing in the side that reached the 1st round of the FA Cup in 1999. Still fast, tenacious and a massive handful for defenders.

Roscoe D'sane: Forward

Roscoe joined the club in 2012 have acquired a wealth of experience playing for senior clubs up and down the country, including Southend United, Woking, Aldershot Town and professional clubs AFC Wimbledon, Accrington Stanley and Torquay United. Whilst playing at Aldershot he also represented England National Game squad scoring four times in seven appearances.

Gareth Williams: Forward

Williams started his pro career at Crystal Palace and was then on loan at Cambridge, Bournemouth and Colchester United (where he signed in 2004), Blackpool and from Weymouth to he moved to Bromley where he scored 52 goals in 127 appearances. Spells at other clubs followed. He joined Whyteleafe from Hasting United.

First Eleven Appearances and Goals

Name	Debut	2013-2014				Career Totals			
		App	Sub	Total	Goals	App	Sub	Total	Goals
Nathan AYLING	15.11.2008	8	2	10	1	80	22	102	8
Robbie BURNS	14.08.2007	7	2	9	1	202	14	216	122
Kieran CAMPBELL	29.09.2012	12	0	12	0	14	0	14	0
Sam CURRIE	04.08.2012	11	0	11	0	60	2	62	1
Ali DEWAR	29.10.2011	2	0	2	1	34	19	53	5
Karl DOUGHLIN	03.08.2013	10	0	10	2	10	0	10	2
Carl DOWNS	17.09.2011	7	1	8	0	65	7	72	2
Russell HARTT	10.08.2013	1	1	2	0	1	1	2	0
Jamie HATFIELD	11.11.2006	10	0	10	0	216	11	227	6
Ben HAYWARD	07.03.2007	11	0	11	0	217	24	241	16
Jordayne HENRY	10.08.2013	2	1	3	0	2	1	3	0
Kyle HOUGH	14.08.2007	12	0	12	9	237	11	248	125
Reece JACKSON	03.08.2013	4	2	6	2	4	2	6	2
Mark JARMAN	08.08.2009	2	3	5	1	99	42	141	53
Richard LEDIJU	13.08.2013	0	1	1	0	0	1	1	0
Dale MARVELL *	15.01.2000	0	1	1	0	250	40	290	80
Alex McGREGOR	08.08.2009	7	2	9	2	125	19	144	18
Alex McKAY	20.12.2008	9	0	9	3	50	15	65	5
George MURPHY	19.03.2013	6	1	7	0	15	2	17	0
Antony MYERS	23.12.2006	2	2	4	1	60	25	85	7
Anthony PANAYI	14.11.2010	8	1	9	1	105	10	115	3
Montell SHAW	N/A	0	0	0	0	0	0	0	0
Matt SMITH	08.08.2009	0	8	8	0	86	32	118	0
James TAYLOR	26.08.2013	1	1	2	0	1	1	2	0

Up to and including: **CHESSINGTON & HOOK UNITED (CCLP)**
(Saturday 14 September 2013) (12 games)

* No longer at the club.

This Season's Match Sponsors

Opponent	Date	Match Sponsor	Ball Sponsor
Westfield	06.08.2013	Epsom & Ewell FC Committee	
Whyteleafe (FA Cup)	21.08.2013	"Boys at the half-way line"	Peter Beddoe
Croydon	26.08.2013	Marvin Hough	
Bedfont Sports	07.09.2013	Geoff and Steve Dyke	
Chessington & Hook	14.09.2013		John Ward
Whyteleafe (FA Vase)	21.09.2013	Paul Merritt	
Wembley	24.09.2013		
Badshot Lea	05.10.2013		
Raynes Park Vale	15.10.2013		
Frimley Green	19.10.2013	The Jarman Family	
Chertsey Town (SSC)	23.10.2013		
Hartley Wintney	26.10.2013		
Mole Valley SCR	30.11.2013		
Windsor	21.12.2013	In Memory of Doug and Liz Burns	
Horley Town	28.12.2013		
Farnham Town	11.01.2014		
Alton Town	25.01.2014		
Cove	08.02.2014		
Molesey	01.03.2014	John Herbert	
Colliers Wood United	08.03.2014	Joe Hagan P.G.A. Golf Professional 01932 267666	
Ash United	22.03.2014		
Camberley Town	05.04.2014		
South Park	19.04.2014		
Hanworth Villa	26.04.2014		

If you like to sponsor a match or the match ball this season, please contact a Committee Member for details. Cost £40 (match) includes two free tickets and two matchday programmes, £25 (match ball) includes one free ticket and one matchday programme.

Epsom & Ewell Football Club
would like to thank all the above sponsors for their support!

League Match Report

Epsom & Ewell 0-1 Chessington & Hook United

Combined Counties League Premier Division – Saturday 14 September 2013

Epsom & Ewell suffered their traditional 0-1 defeat at home to Chessington & Hook in a game brought forward from November. This has been the outcome in the last three seasons and form was maintained today. The opening exchanges were characterised by a lot of effort from both Teams and it was clear there would be a big physical battle between Mark Jarman and Tommy Moorhouse of Chessington who featured briefly for the Salts a few seasons back. The game was quite niggly and not an easy one to referee with a lot of stoppages interrupting the flow of the game. Chessington were very determined and committed from the off and on 15 minutes, they won a challenge in the midfield and the ball fell to Dan Harding who beat Epsom 'keeper Kieran Campbell to the ball and poked it past him to give his side the lead. He had a chance to double the lead when, sent clear following a similar through ball, he appeared to be brought down by Sam Currie. Referee Tusan Yusilyurt pointed to the spot and booked Currie who disputed the contact. After the double penalty save in last year's fixture, another came along in an incident either comic or tragic depending who you were supporting. Harding took the penalty and whilst the referee still appeared to be talking to him attempted to dink it down the middle of the goal and massively under hit it. Epsom goalkeeper Kieran Campbell knelt down and waited for the ball to arrive in the easiest penalty save he'll ever make.

Epsom & Ewell could have been buoyed by their escape but they were not able to create very much in terms of clear cut chances. Tempers flared following another tussle in the middle of the park and an unseemly scuffle erupted involving a number of players. Chessington 'keeper Mark Daniels in particular was fortunate to escape with only a yellow card for his role in inflaming the melee. Jarman and Moorhouse also seeing yellow.

Half-Time: Epsom & Ewell 0-1 Chessington & Hook

Epsom only offered very fleeting glimpses of the passing play that has taken them to the top of the League. All too often passes went astray or Chessington players were first to the ball. When called upon, Daniels made a couple of fine saves as Epsom tried to be more direct in the closing stages to pull the game back as did Kieran Campbell in foiling a couple of Chessington breaks as Epsom threw men forward to try and salvage the game. The closest calls coming in the last 10 minutes as Nathan Ayling's header and follow up header were scrambled away. The hopeful thought to go home with is that last season, a run of 12 wins followed the home defeat to Chessington and Lyndon will be looking for the side to recover their form starting with Whyteleafe in the Vase on Saturday.

Full-Time: Epsom & Ewell 0-1 Chessington & Hook

Report by Steve Dyke

Epsom & Ewell Fun Day

Entrance **£2.00** in advance or **£4.00** on the day, children under 12 free.
Car Parking **£2.00** (Last entry 4.30pm)
You must purchase a programme (1 per person) to gain entry to the Family Fun Day

EPSOM & EWELL BOROUGH
FAMILY FUN DAY

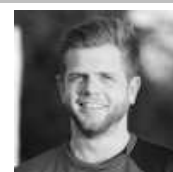
CHARITY EVENT ORGANISED BY EPSOM & EWELL ROTARY CLUBS
Sunday 22nd September 2013
From 12 noon at Hook Road Arena KT19 8QG

WHATS ON

Pegasus Parachute Display	Huxley's Birds of Prey Centre Falconry Display
Southern Retriever Dog Display Team	Lots of Family Games and Fun
Family Dog Show	Loads of Stalls, many run by our local Community & Charities.
Vintage/Classic Vehicles	Picnic Area
Children's Fair Ground	Food Court
Displays from Local Groups	Arts and Crafts and much more...
Face Painting	
Punch and Judy	

www.epsomfunday.net

Player Sponsorship (Cont.)



Ben Hayward

Awaiting sponsor



Karl Doughlin

Jeff and Arnold Pye



Alex McGregor

Joe Hagen PGA Golf
01932 267666



Reece Jackson

Awaiting sponsor



Kyle Hough

Awaiting sponsor



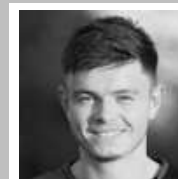
Matt Smith

Awaiting sponsor



Carl Downs

Awaiting sponsor



George Murphy

Awaiting sponsor



Ali Dewar

ID & JD Services Limited



Antony Myers

Awaiting sponsor



Mark Jarman

Ann Summers Ltd



Robbie Burns

Charles Bowry MM

If you would like to sponsor a player this season, please speak to a member of the Committee. Cost per player £40 for the season.

Player Sponsorship



Lyndon Buckwell
(Manager)

Awaiting Sponsor



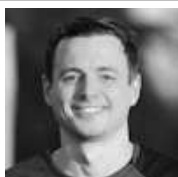
Glynn Mandeville
(Assistant Manager)

Awaiting sponsor



Ken Jones
(Physio)

Awaiting sponsor



Jamie Hatfield
(Captain)

Peter Lumm



Sam Currie

Awaiting Sponsor



Alex McKay

Awaiting Sponsor



Tony Coombe
(Assistant Manager)

Awaiting sponsor



Russell Banyard
(Player-Coach)

Awaiting sponsor



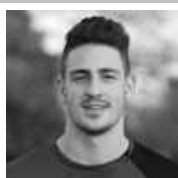
Jamie McConnell
(Kit man)

Awaiting sponsor



Kieran Campbell
(Goalkeeper)

Awaiting sponsor



Anthony Panayi

Douglas Burns and
Paul Marshall



Nathan Ayling

Awaiting sponsor

If you would like to sponsor a player this season, please speak to a member of the Committee. Cost per player £40 per season.

CCL Premier Division Clubs – Results

Saturday 14 September 2013

FA Cup with Budweiser – 1st Qualifying Round

Burgess Hill Town (IL1S)	8-1	ALTON TOWN	
HARTLEY WINTNEY	0-0	CAMBERLEY TOWN	148
Hungerford Town (SLP)	4-0	COVE	
SOUTH PARK	1-1	Horsham (IL1S)	227
WEMBLEY	0-2	Haringey Borough (ESL)	60
WESTFIELD	1-1	Aylesbury United (SL1C)	201
Whyteleafe (SCEL)	3-0	HORLEY TOWN	117

Combined Counties League – Premier Division

Badshot Lea	2-1	Windsor	79
Bedfont Sports	0-1	Farnham Town	36
Colliers Wood United	2-5	Mole Valley SCR	25
Croydon	2-4	Hanworth Villa	26
EPSOM & EWELL	0-1	Chessington & Hook United	47
Raynes Park Vale	3-2	Ash United	27

Tuesday 17 September 2013

FA Cup with Budweiser – 1st Qualifying Round Replay

CAMBERLEY TOWN	0-2	HARTLEY WINTNEY	
Horsham (IL1S)	5-2	SOUTH PARK	

Combined Counties League – Premier Division

Horley Town	1-2	Croydon	
Molesey	1-2	Colliers Wood United	
Wembley	4-1	Chessington & Hook United	

Wednesday 18 September 2013

FA Cup with Budweiser – 1st Qualifying Round Replay

Aylesbury United (SL1C)	2-0	WESTFIELD	
-------------------------	-----	-----------	--

Fixtures, Results and Line-ups 2013-2014

Key: CCL – Combined Counties League Premier Division, **CCL PCC** – Combined Counties League Premier Challenge Cup, **FAC** – FA Challenge Cup, **FAV** – FA Challenge Vase, **SSC** – Surrey Senior Cup
SCC – Southern Combination Cup

Number in brackets after name denotes player who was substituted. Epsom & Ewell score noted first.

No	DATE	DAY	COMP	H/A	OPPONENTS	F/T	90m	H/T	SCORERS	1	2	3	4	5	6	7	8	9	10	11	SUB 1	SUB 2	SUB 3	ATT
1	03.08.2013	Sat	CCLP	A	Alton Town	1-0		0-0	Panayi	Campbell	Currie	Hatfield	Panayi	McKay	Ayling	Hayward	Doughlin	Jackson	Hough	McGregor	Smith (2)	Marvell (11)		97
2	06.08.2013	Tue	CCLP	H	WESTFIELD	2-1		1-0	McKay (2)	Campbell	Currie	Hatfield	Panayi	McKay	Ayling	Hayward	Doughlin	Jackson	Hough	McGregor	Smith (8)	Burns (9)		71
3	10.08.2013	Sat	CCLP	A	Mole Valley SCR	3-0		2-0	McGregor, Hough 2 (1 pen)	Campbell	Currie	Hatfield	Panayi	Hartt	Ayling	Hayward	Downs	Burns	Hough	McGregor	Myers (11)	Henry (10)	Murphy (4)	43
4	13.08.2013	Tue	CCLP	A	Camberley Town	2-0		0-0	Dewar, Hough	Campbell	Currie	Hatfield	Panayi	McKay	Ayling	Hayward	Downs	Burns	Hough	Dewar	Lediju (11)			91
5	17.08.2013	Sat	FAC EP	A	Whyteleafe	3-3		3-1	Myers, Hough, Jackson	Campbell	Currie	Hatfield	Panayi	Murphy	Doughlin	Hayward	Downs	Burns	Hough	Myers	Jackson (7)	Smith (11)		118
6	21.08.2013	Wed	FAC EPR	H	WHYTELEAFE	1-6		0-3	Hough (pen)	Campbell	Currie	Hatfield	Panayi	Murphy	Doughlin	Dewar	Downs	Burns	Hough	Myers	Jarman (7)	McGregor (11)	Ayling (8)	93
7	24.08.2013	Sat	CCLP	A	Cove	3-0		1-0	McGregor, Ayling, Hough	Campbell	Currie	Hatfield	McKay	Murphy	Ayling	Hayward	Doughlin	Jackson	Hough	McGregor	Smith (2)	Downs (6)	Hartt (8)	48
8	26.08.2013	Mon	CCLP	H	CROYDON	2-0		1-0	Doughlin, Jackson	Campbell	Currie	Hatfield	McKay	Murphy	Downs	Hayward	Doughlin	Jackson	Hough	McGregor	Taylor (5)	Smith (9)	Burns (11)	57
9	31.08.2013	Sat	CCLP	A	Ash United	3-2		2-2	Hough (2), Burns	Campbell	Currie	Hatfield	McKay	Murphy	Downs	Hayward	Doughlin	Burns	Hough	McGregor	Jarman (11)	Ayling (7)		76
10	07.09.2013	Sat	CCLP	H	BEDFONT SPORTS	1-0		0-0	McKay	Campbell	Taylor	Hatfield	McKay	Murphy	Downs	Hayward	Doughlin	Burns	Hough	Ayling	Panayi (5)	Jarman (6)	Smith (7)	63
11	10.09.2013	Tue	CCL PCC1	A	Horley Town	3-2		1-1	Doughlin, Hough, Jarman	Campbell	Currie	Henry	Panayi	McKay	Ayling	Hayward	Doughlin	Burns	Hough	Jarman	McGregor (7)	Smith (6)		35
12	14.09.2013	Sat	CCLP	H	CHESSINGTON & HOOK UNITED	0-1		0-1		Campbell	Currie	Henry	Panayi	McKay	Ayling	Hayward	Doughlin	McGregor	Hough	Jarman	Jackson (8)	Myers (3)	Smith (9)	47
13	21.09.2013	Sat	FAV 2Q	H	WHYTELEAFE																			
14	24.09.2013	Tue	CCLP	H	WEMBLEY (1945)																			
15	28.09.2013	Sat	CCLP	A	Windsor																			
16	02.10.2013	Wed	CCL PCC2	A	AFC Croydon Athletic (1945)																			
17	05.10.2013	Sat	CCLP	H	BADSHOT LEA																			
18	12.10.2013	Sat	CCLP	A	Farnham Town																			
19	15.10.2013	Tue	CCLP	H	RAYNES PARK VALE (1945)																			
20	19.10.2013	Sat	CCLP	H	FRIMLEY GREEN																			
21	23.10.2013	Tue	SSC 1	H	CHERTSEY TOWN (Provisional date)																			
22	26.10.2013	Sat	CCLP	H	HARTLEY WINTNEY																			
23	02.11.2013	Sat	CCLP	A	Hanworth Villa																			
24	09.11.2013	Sat	CCLP	A	Raynes Park Vale																			
25	16.11.2013	Sat	FREE																					
26	23.11.2013	Sat	CCLP	A	Molesey																			
27	30.11.2013	Sat	CCLP	H	MOLE VALLEY SCR																			
28	07.12.2013	Sat	CCLP	A	Colliers Wood United																			
29	14.12.2013	Sat	CCLP	A	Wembley																			
30	21.12.2013	Sat	CCLP	H	WINDSOR																			
31	28.12.2013	Sat	CCLP	H	HORLEY TOWN																			
32	04.01.2014	Sat	CCLP	A	South Park																			
33	11.01.2014	Sat	CCLP	H	FARNHAM TOWN																			
34	18.01.2014	Sat	CCLP	A	Westfield																			
35	25.01.2014	Sat	CCLP	H	ALTON TOWN																			
36	01.02.2014	Sat	CCLP	A	Frimley Green																			
37	08.02.2014	Sat	CCLP	H	COVE																			
38	15.02.2014	Sat	CCLP	A	Hartley Wintney																			
39	22.02.2014	Sat	CCLP	A	Badshot Lea																			
40	01.03.2014	Sat	CCLP	H	MOLESEY																			
41	08.03.2014	Sat	CCLP	H	COLLIERS WOOD UNITED																			
42	15.03.2014	Sat	CCLP	A	Horley Town																			
43	22.03.2014	Sat	CCLP	H	ASH UNITED																			
44	29.03.2014	Sat	CCLP	A	Bedfont Sports																			
45	05.04.2014	Sat	CCLP	H	CAMBERLEY TOWN																			
46	12.04.2014	Sat	CCLP	A	Chessington & Hook United																			
47	19.04.2014	Sat	CCLP	H	SOUTH PARK																			
48	21.04.2014	Mon	CCLP	A	Croydon (1130)																			
49	26.04.2014	Sat	CCLP	H	HANWORTH VILLA																			
50	TBA	TBA	SCC 1	H	CHIPSTEAD																			
51																								
52																								
53																								
54																								